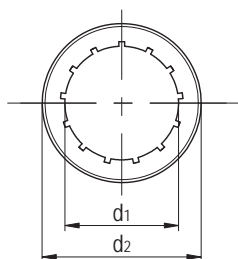
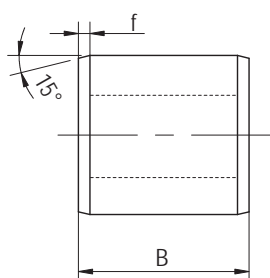


## LIN-02 压配合全塑料直线轴承 Compact plastic linear bearings



- 高性能EPB25材料制成
- 过盈配合压装
- 适用于污垢或灰尘环境
- 使用温度-60℃/+140℃
- Made from EPB25 high-performance polymers
- Assembly by press fitting
- Unaffected by dirt and dust
- Operation temperature -60℃/+140℃

### 标准规格 Standard specifications



产品编码 Part No.:

LIN-02-06

轴承内径 Inner diameter

LIN-02 系列直线轴承  
LIN-02 standard bearings

座孔 Housing: H7 轴 Shaft: h6-h9

产品编码 Part No.	d <sub>1</sub> [mm]	d公差 Tolerance [mm]	d <sub>2</sub> [mm]	B [mm]	f [mm]
LIN-02-06	6	+0.032/+0.070	12	22	1
LIN-02-08	8	+0.032/+0.070	15	24	1
LIN-02-10	10	+0.030/+0.088	17	26	1.5
LIN-02-12	12	+0.030/+0.088	19	28	1.5
LIN-02-16	16	+0.030/+0.088	24	30	1.5
LIN-02-20	20	+0.030/+0.091	28	30	2
LIN-02-25	25	+0.030/+0.091	35	40	2
LIN-02-30	30	+0.040/+0.110	40	50	2.5

产品编码 Part No.	轴径 Shaft [mm]	座孔 Housing H7 [mm]	公差 Tolerance [mm]	F max. [N] 最大动载荷 Dynamic Load P=5MPa	F max. [N] 最大静载荷 Static Load P=35MPa	重量 Weight [g]
LIN-02-06	6	12	0/+0.018	510	3570	1.5
LIN-02-08	8	15	0/+0.018	552	3867	2.8
LIN-02-10	10	17	0/+0.018	663	4641	5
LIN-02-12	12	19	0/+0.021	856	5997	6.5
LIN-02-16	16	24	0/+0.021	1224	8568	9.7
LIN-02-20	20	28	0/+0.021	1530	10710	11.7
LIN-02-25	25	35	0/+0.025	2550	17850	22.8
LIN-02-30	30	40	0/+0.025	3825	26775	34.9